

The Mews at Cary Mill

1708



Units	6
Built	2008
Parking	12 garage/2 lot
Heating	Electric Heat Pump
Cooling	Central Air
Cooking	Electric
Cabinets	Maple
Counters	Granite
Appliances	Professional Series Stainless
Flooring	Wood Frize
Dues	\$188/month
Includes	Water/sewer, trash, snow removal, building insurance
Taxes	TBD

DESIGN MAKES THE DIFFERENCE

Sweeping, clean lines and walls of glass overlooking private outdoor spaces are just some of the features brought to you by the Mews' West Building.

With a contemporary flair and modern building elements, The West Building is another example of the growing diversity that is defining Richmond's new architecture.

The West is comprised of one and two story luxury spaces with understated yet sleek finishes making it ready to accept any decor selections. The spacious interiors and private outdoor spaces make it comfortable and livable.

Contemporary urban living at it's best.

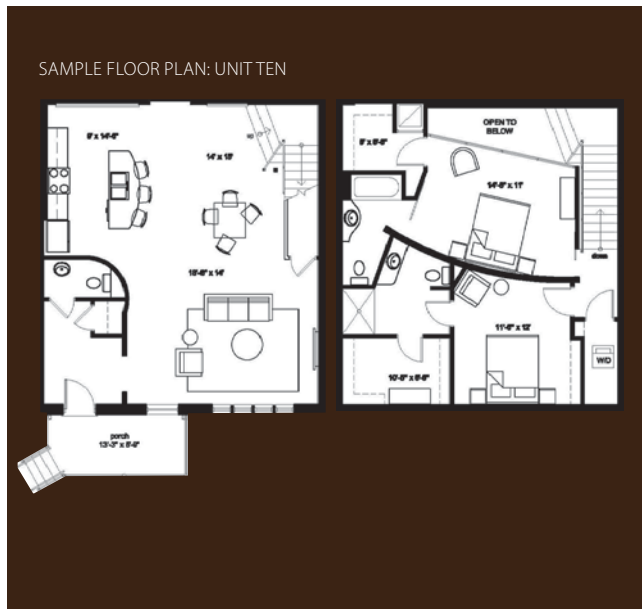
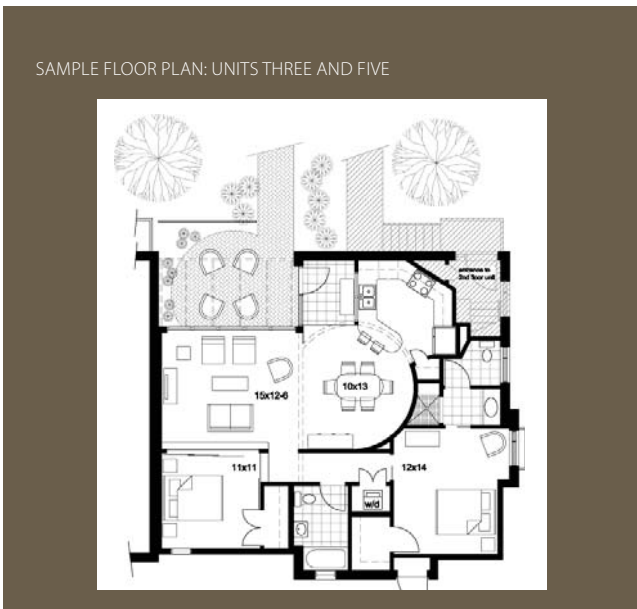
CREATING FROM WITHIN

Using the bricks, blocks and beams that have been shaped by a century of use, the East Building now offers 7 unique warehouse spaces that combine Richmond's past with the bright future.

The exposed nature of warehouse living means character abounds and the contemporary design means the spaces flow. The flexibility of the plans means options for living and the volume of space showcases the design.

Luxury, convenience and intelligence are at the core of the East.

Units	7
Built	1900-1940
Renovated	2008
Parking	12 garage/2 lot
Heating	Electric Heat Pump
Cooling	Central Air
Cooking	Electric
Cabinets	Maple
Counters	Granite
Appliances	Professional Series Stainless
Flooring	Wood Frize
Dues	\$202/month
Includes	Water/sewer, hot water, trash, snow removal, building insurance
Taxes	Abated in East



UNITS

one 1260 sqft 2 bed 2 baths patio	four 1660 sqft 2 bed 2.5 bath balcony patio
two 1660 sqft 2 bed 2.5 bath balcony patio	five 1260 sqft 2 bed 2 baths patio
three 1260 sqft 2 bed 2 baths patio	six 1660 sqft 2 bed 2.5 bath balcony patio

UNITS

seven 946 sqft 1 bedroom 1.5 baths	eleven 1375 sqft 2 bedroom 2.5 baths
eight 945 sqft 1 bedroom 1.5 bath	twelve 1230 sqft 1 bedroom 1.5 bath
nine 1368 sqft 2 bedroom 2 baths	thirteen 1442 sqft 2 bedroom 2 bath
ten 1543 sqft 2 bedroom 2.5 bath	

THE TEAM

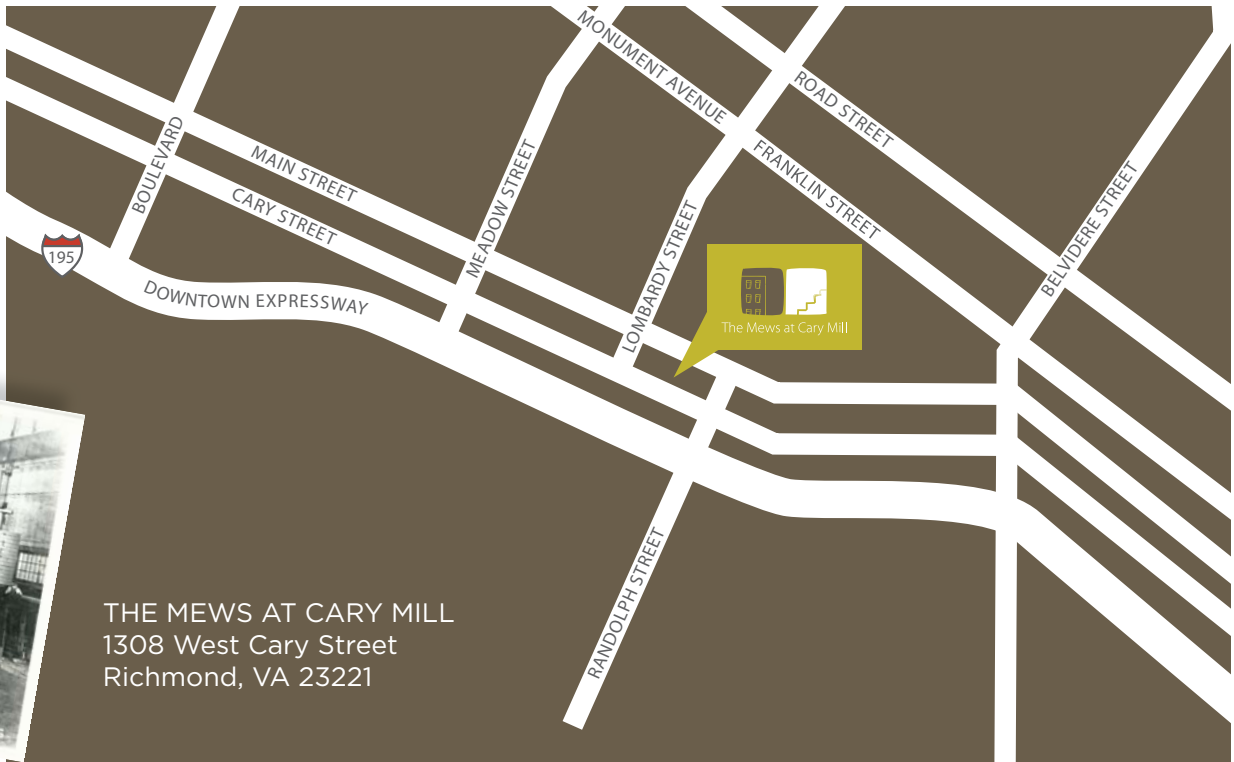
Developer: Shelmar Investments
Monument Construction
Architect: Johannas Design Group
Contractor: Monument Construction
Agent: One South Realty Group

THE ORIGINAL PROPERTY

Sometime around the turn of the century, CW Montgomery, Stair Builder and Office Fittings built a warehouse that would grow over time. Housing numerous businesses, including Cary Lumber and Manufacturing and the CF Duggins Planing Mill, this historic warehouse was a mainstay of Richmond mill works for over 100 years.



THE MEWS AT CARY MILL
1308 West Cary Street
Richmond, VA 23221



ONE CITY. ONE FOCUS. ONE UNIQUE REALTY GROUP.

One South Real Estate Group is the leading firm in the emerging Richmond market with knowledge of trends, development and the subtle differences in the vibrant neighborhoods that form our city. Bringing advanced marketing techniques to the new era of real estate, OSRG can offer pointed and substantial advice, to both buyers and sellers, in a fast paced and evolving market.



1435 WEST MAIN STREET, RICHMOND, VIRGINIA 23220
www.onesouthrealty.com

804.353.0009 | 804.353.0991 FAX

Disclaimer | All information deemed reliable but not guaranteed. One South Realty Group and its agents make no warranties, either express or implied as to the validity of the information provided herein. Prices and availability subject to change without notice.

